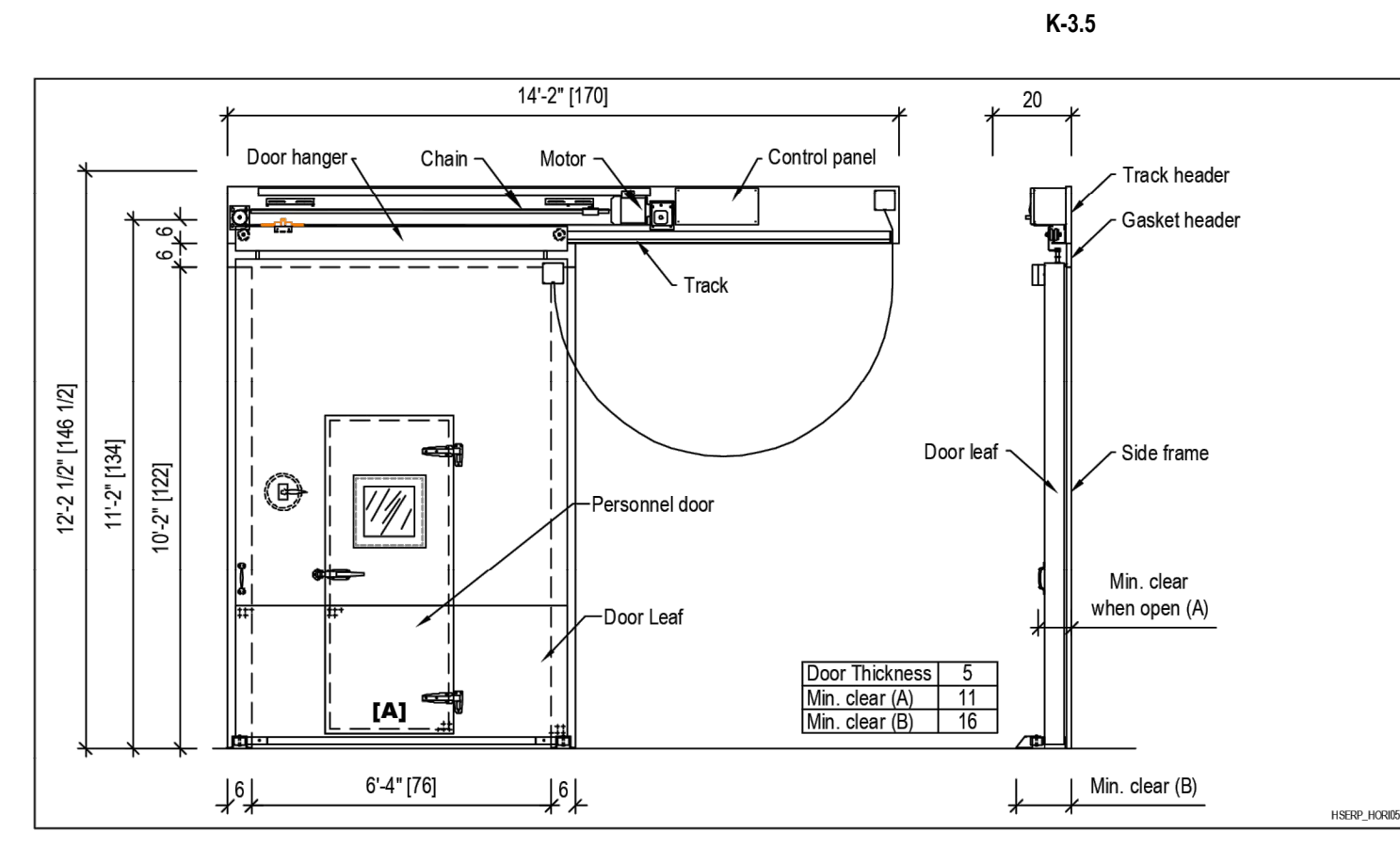
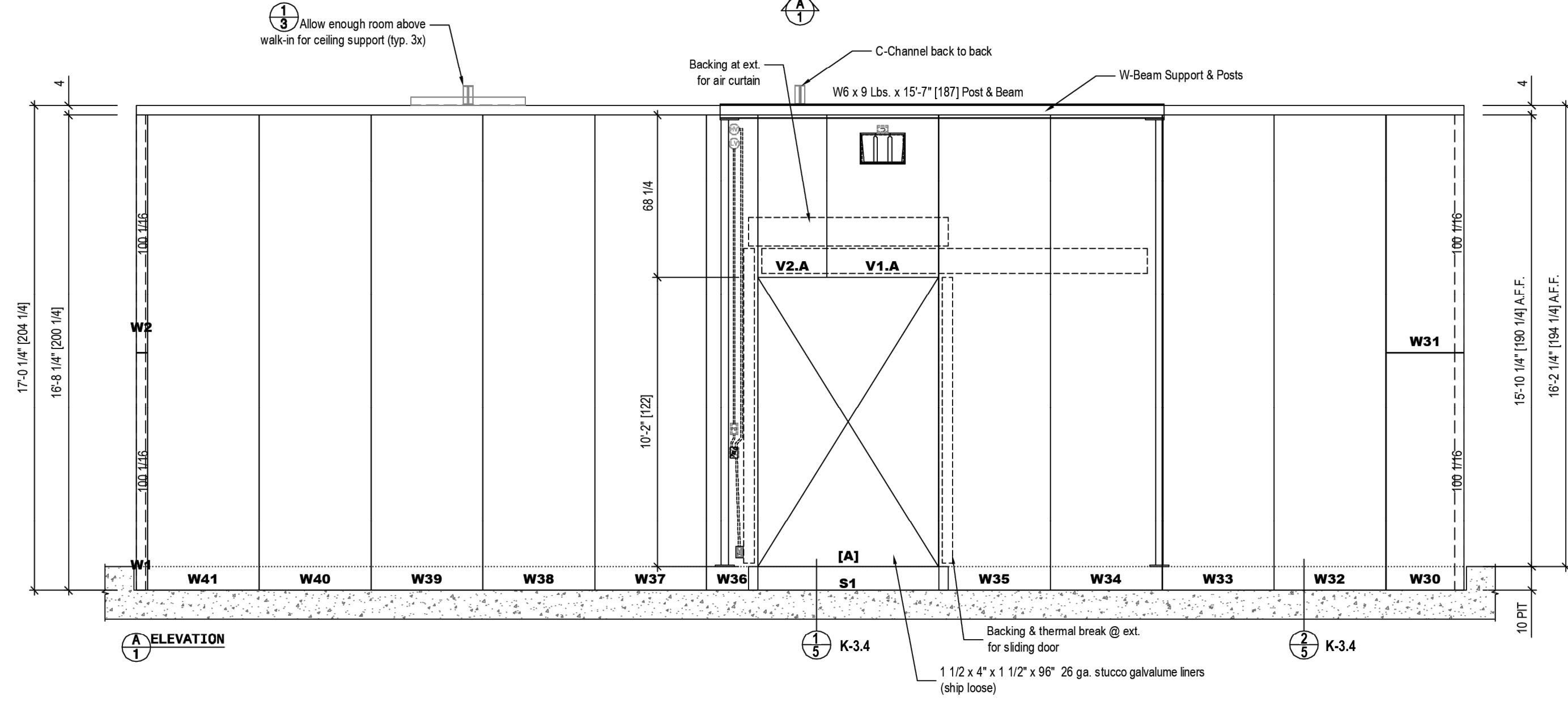


Estimated Walk-in Weight:  
16,924 lbs.



**TAMARACK GROVE ENGINEERING**

851 N. Hickory Ave, Suite 200 Meridan, ID 83642  
(208) 345-8941

web: [www.tamarackgrove.com](http://www.tamarackgrove.com)  
firm #: N/A  
Project #: 25-25952

FOOD SERVICE DESIGN GROUP  
SAN DIEGO, CA  
NATIONAL CITY SCHOOL DISTRICT WAREHOUSE  
NATIONAL CITY, CA

**25-IB-14381-01**  
25-IB-14381.0001-05

IMPERIAL BROWN  
1000 S. Broadway  
Gresham, OR 97030  
Phone: 503-665-5539  
Fax: 503-665-5538  
[www.imperial-brown.com](http://www.imperial-brown.com)

DO NOT SCALE THIS DRAWING

SCALE: 3/16" = 1'-0"

DATE DRAWN: 1/9/2025  
DATE PRINTED: 4/16/2025  
BY: Kyle Lewis

CHK'D BY:

DRW#: **25-IB-14381-01**  
BOX: 1 OF 1  
SHEET: 2 OF 6

FOOD SERVICE DESIGN GROUP  
**FSDG**  
INNOVATIVE FOOD SERVICE DESIGN

CONSULTANT

©SGPA 2025

STAMP

PREPARED FOR THE  
**BOARD OF EDUCATION**  
NATIONAL SCHOOL DISTRICT  
NATIONAL CITY, CALIFORNIA

PREPARED BY  
**SGPA ARCHITECTURE AND PLANNING**

FOOD SERVICE WALK-IN FREEZER DRAWING

**CENTRAL WAREHOUSE**  
**FREEZER REPLACEMENT**

1400 N AVENUE  
NATIONAL CITY, CA 91950

SUBMITTALS / REVISIONS

#	ISSUE	DATE
1	DSA SUBMITTAL V1	03/19/2025
2	DSA SUBMITTAL V2	04/30/2025

**BID SET 5/1/2025**  
**NOT FOR CONSTRUCTION**  
**PROJECT STILL IN REVIEW**

PROJECT NO. 2239-E-02  
SHEET NO.

**K-3.1**